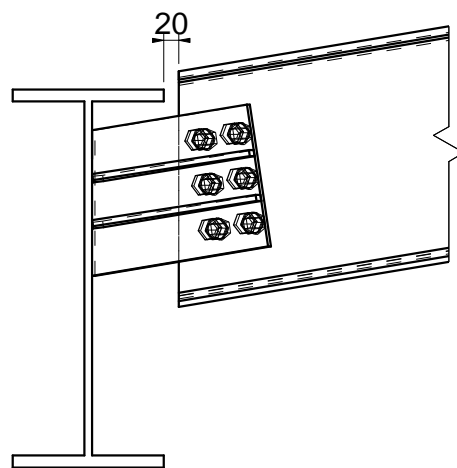
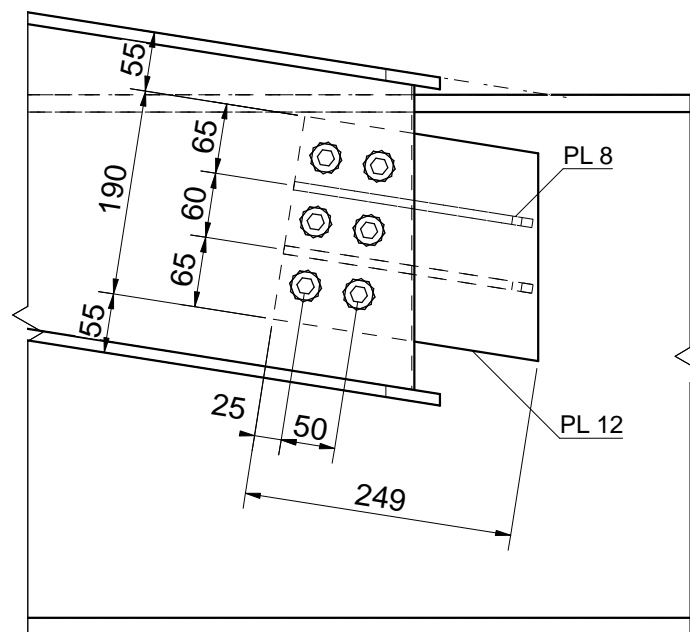


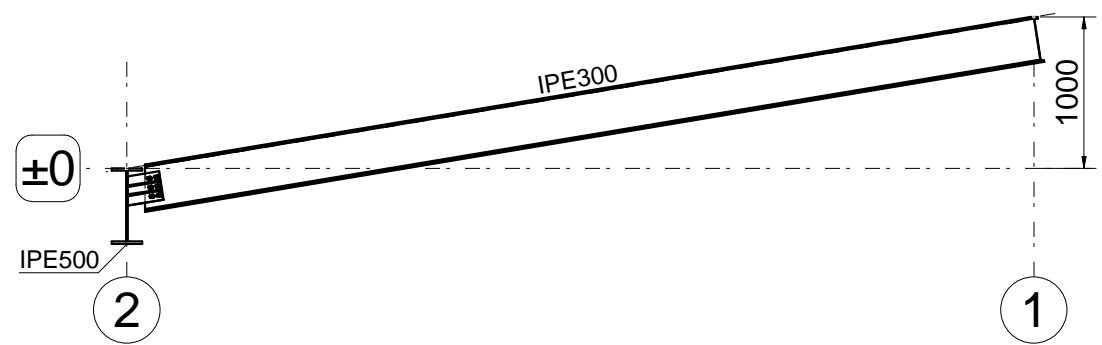
3D View



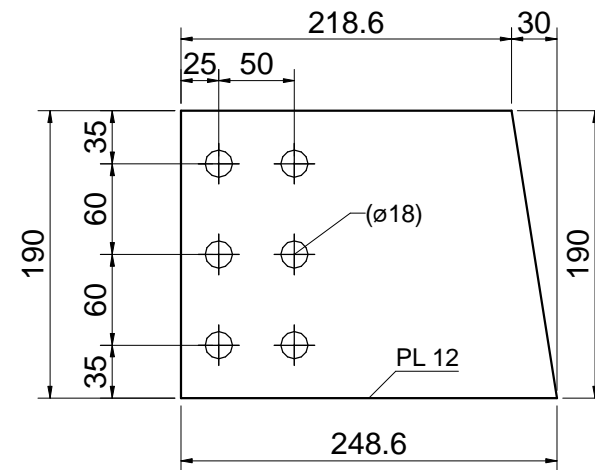
View on line A



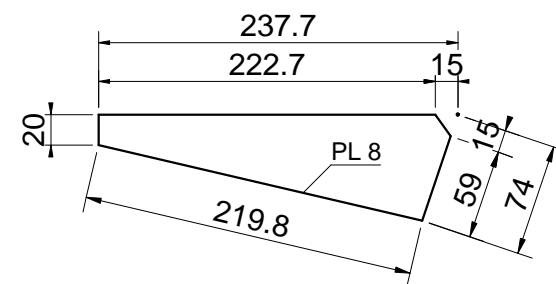
A - A



View on line A



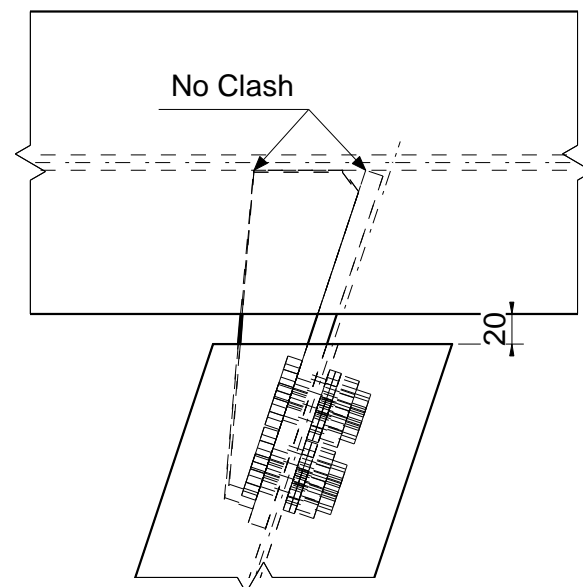
Fin Plate



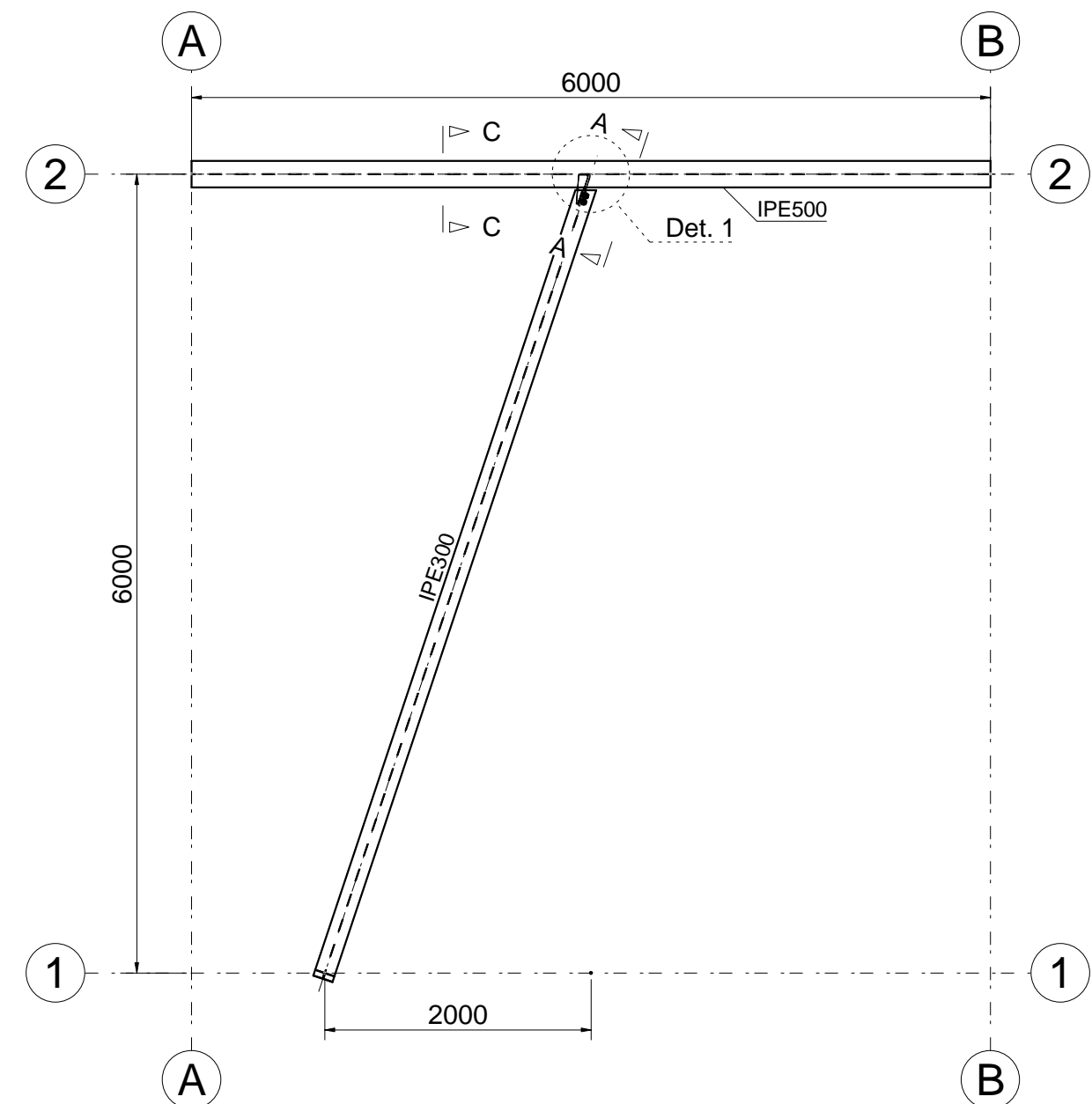
Bottom Stiffener



Top Stiffener



Det 1



Plan View

Model the Skewed Fin Plate as shown

- You cant use any macros
- The Secondary is shifted both in X (2000 mm) and in Z (1000 mm)
- Assume reasonable values for any information not shown
- The Top and bottom stiffeners have different geometries
- There are no clashes between the Fin Plate and the web as well as the stiffeners and the web
- You can watch the tutorial at our channel [https://youtu.be/aL4RdgBtG\\_A](https://youtu.be/aL4RdgBtG_A)